



# SUN BLIND BLINDS C80

*TECHNICAL DOCUMENTATION FOR OPERATION*

DTE/Z/C80/1



**Table of contents**

Product name and manufacturer's details .....	4
Product safety tips.....	5
Explanations of symbols and signs.....	5
Definitions.....	6
Subject matter, purpose and content of the documentation .....	6
<b>TECHNICAL INFORMATION ABOUT THE PRODUCT .....</b>	<b>6</b>
Technical parameters.....	6
<b>INSTALLATION.....</b>	<b>7</b>
General requirements for safe installation.....	7
General requirements for safe installation.....	7
Requirements for safe installation of the product at height .....	7
Ready for installation .....	8
Installation tools .....	8
Order of execution of assembly activities .....	8

**Product name and manufacturer's details**

NAME  
SUN CURTAIN  
ŻALUZJA C80

**PRODUCT MANUFACTURER'S DESIGNATION**

Manufacturer name:  
NERLI GROUPS Poland

Manufacturer's headquarters:  
Kościerzycy 130, 49-314 Piszczowice

Website:  
[www.nerligruppen.com](http://www.nerligruppen.com)

Contact details:  
Phone: +48 77 419 60 89  
e-mail: [info@nerligruppen.com](mailto:info@nerligruppen.com)

**PRODUCT SAFETY MARKING:**  
The product meets the CE safety requirements

This technical and operational documentation:  
valid from 01 January 2022 .  
in the scope of products marked above






The product has been made in accordance with the latest technical knowledge in the field of construction and manufacturing technology and meets the safety requirements in accordance with the following standards.

**Product safety tips**

Lp.	Subject	European Legal Basis	Polish Legal Basis
1.	External curtains. Performance requirements including safety	EN-13659:2004+A1:2008	PN-EN 13659:2004+A1:2008
2.	Essential requirements for machinery	Directive 2006/42/EC of the European Parliament and of the Council	Regulation of the Minister of Economy of 28 October 2008 (Journal of Laws No. 1228.2008)
3.	Overall product safety	Directive 2001/95/EC of the European Parliament and of the Council	Journal of Laws of 12 December 2003, No. 229, item 2275, as amended. d.

**Explanations of symbols and signs**

The following symbols (pictograms) indicate particularly important information on safety and threats.

Pictogram	Meaning of the pictogram	Information
	INFORMATION	Before using the product, please read the instruction manual Compliance with the instructions is a prerequisite: - trouble-free operation of the product, - pursuing claims for defects. For the safety of persons, the Instruction should be kept.
	REMARK!	No harmful or dangerous consequences for people or objects. A situation that may cause damage to the product or other damage. No danger to humans.
	WARNING!	Risk of danger
	DANGER!	This symbol denotes all safety information, the non-observance of which poses a threat to the life or health of individuals. Threat to life and health. Risk: Danger of serious injury or death. A dangerous operation that could cause injury or damage to the product.
	WARNING!	Danger to health or life through electric shock.

## Definitions

In the technical and operational documentation, the following terms and definitions are used:

Product: blind type C80

Blind: an external sunshade, mounted outside the building, above the opening or inside the window opening, in which raising and lowering the slats made of aluminum strips is carried out using a control mechanism (manual - with a manual crank, or electric - with a drive system connected to the control system).

Slats: also called lamellas, are a part of the product made of aluminum strips, which is set in motion using a mechanism that ensures that the product meets its function.

## Subject matter, purpose and content of the documentation

The subject of this documentation are products manufactured by NERLI GRUPPEN Poland under the name C80 external façade blinds.

The documentation is valid together with the device-specific information available on the [www.nerligruppen.com](http://www.nerligruppen.com) website.

The documentation is a component of the delivery of the product and should be constantly stored in its vicinity.

The documentation shall include:

- important recommendations for the installation, use and maintenance of the product,
- guidelines, the observance of which will allow for long-term and trouble-free use of the product.

NERLI GRUPPEN Poland is not responsible for any damage resulting from non-compliance with the recommendations contained in this documentation.

In order to further improve the products, NERLI reserves the right to make changes that, while maintaining important technical parameters, will be considered expedient to increase the quality of product service and safety of use.

The copyright to this documentation is the property of NERLI GRUPPEN Poland.

This documentation may not be used for competitive activities or made available to third parties, either in part or in whole, without the owner's permission.

## TECHNICAL INFORMATION ABOUT THE PRODUCT

### Technical parameters

Venetian blinds C80			
Maximum dimensions	Max width	Max height	Max area
Electric drive (guide)	4600 mm	4500 mm	20,7 m <sup>2</sup>
Dimensions of the slat	80,4 mm	12,4 mm	0,42 mm
<b>Available with slides or with extruded aluminium slides</b>			
<b>Electric drive - motor characteristics:</b>			
- power supply	230 V / 50 Hz		
- power	90 W to 230 W (depending on motor type)		
- current consumption	0.4 to 1 A (depending on engine type))		
- protection	IP 44, IP 54 (depending on the type of motor)		
- continuous operation time	4 to 6 minutes (depending on engine type)		
- torque	6 Nm to 20 Nm (depending on engine type)		
- velocity	24 rpm. - SOMFY; 26 rpm. - ELERO and GEIGER		
- operating temperature	- 25 to 70 °C - SOMFY; -20 to 60 °C - ELERO; -10 to 60 °C - GEIGER		
<b>Installation</b>			
Application	External		
Place of installation	Façade of the building		

Technical data of electric motors:

Detailed information can be found on the websites of engine manufacturers: [www.somfy.com](http://www.somfy.com), [www.elero.com](http://www.elero.com), [www.becker-antriebe.com](http://www.becker-antriebe.com), [www.inel.gda.pl](http://www.inel.gda.pl)

## INSTALLATION

### ***General requirements for safe installation***

This chapter contains general requirements for the assembly of the product. Proper assembly is a prerequisite for the smooth functioning of the product. NERLI GRUPPEN Poland recommends the use of specialized assembly teams, guaranteeing the customer to carry out the correct assembly.

### ***General requirements for safe installation***

1. the general rules of the art of construction must be observed,
2. it is necessary to comply with the applicable health and safety regulations, especially regarding the safety of working with electrical devices and work at heights,
3. the system should be protected against dirt, especially hard to remove, caused by adhesives, mortars and construction foams,
4. the product must be mechanically fixed, foams, adhesives and other such are not allowed as fastening materials,
5. the product should be attached to durable elements of the building (walls, steel structure, aluminum structure),
6. in the case of reinforced concrete or solid brick lintels, dowels of dimensions adapted to the load-bearing capacity of the element in which it is to be mounted shall be used for installation,
7. the base to which the system will be attached should be a stable and load-bearing structure (concrete, brick, etc.). It is forbidden to fix the product on elements that do not provide adequate load capacity, e.g. suspended ceilings (elements made of drywall) or insulation (polystyrene, mineral wool). The substrate itself must be dry, even and of adequate mechanical strength,
8. in the case of metal structures, connected to each other in accordance with the applicable rules for joining metals, assembly is carried out to materials of appropriate wall thickness by means of appropriate screws or anchors,
9. before proceeding with the assembly, all unnecessary elements must be removed from the assembly zone,
10. access to the system - for its maintenance - should be possible without dismantling other elements of the building.

### ***Requirements for safe installation of the product at height***

Installation of the product, due to the need to perform work at heights, is a particularly dangerous work, because it poses a particularly high risk of endangering the safety and health of people, in particular falling from a height. The development of a safety and health plan during assembly is the responsibility of the Buyer.

The buyer should specify detailed health and safety requirements when performing work at height, and in particular should ensure:

1. direct supervision over their performance by persons designated for this purpose (e.g. works manager),
2. appropriate safety measures, in particular fall protection equipment,
3. detailed instruction of employees performing work at heights.

Work at a height of more than 2 m, where the use of personal protective equipment against falls from a height is required, must be carried out by at least 2 people.

Work at height should be organized and carried out in a way that does not force workers to lean beyond the rim of the railing or the outline of the device on which they stand.

The purchaser is obliged to ensure that only authorised and properly informed persons have access to the places where work is carried out at a height. Employees of the OHS service should inform employees staying or who may be staying on the site of such works or in the vicinity of such works about the work carried out at height and the necessary safety measures to be applied during this work.

### Ready for installation

1. the supplied system should be checked for completeness of the entire set,
2. before installation, it must be checked that the substrate has a sufficient load capacity to allow safe installation and operation,
3. supply power to the motor.

### Installation tools

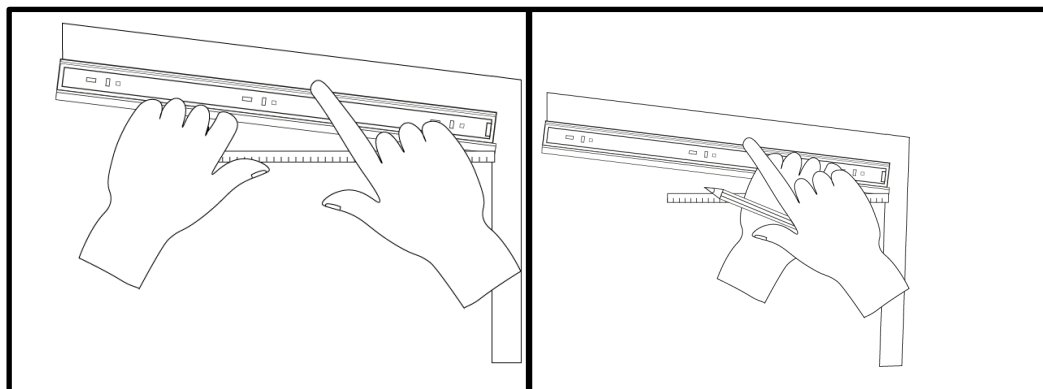
#### List:

- drills for metal and concrete,
- hammer drill,
- ladder or scaffolding,
- hand screwdrivers and cordless screwdriver,
- hammer
- tape measure,
- construction pencil or pen,
- poziomica ,
- hexagonal wrench, flat/eyelet, socket extended.

### Order of execution of assembly activities

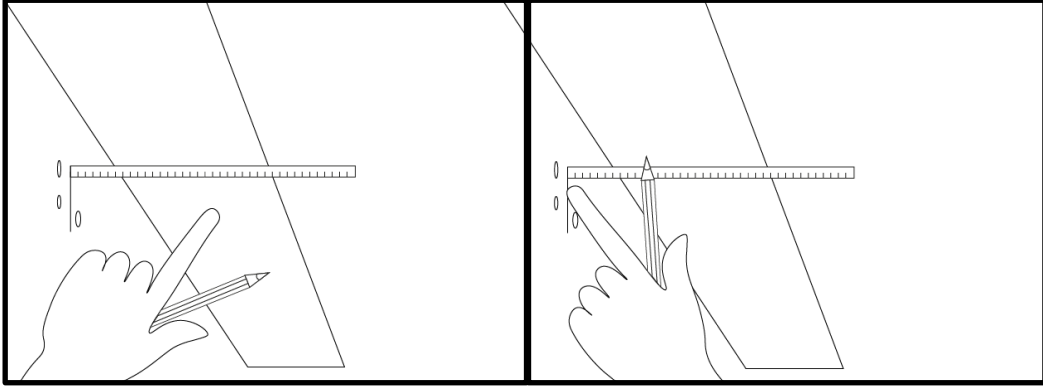
*Before proceeding with the installation, it is necessary to check whether the substrate is suitable for installation – if the strength of the substrate is weaker, a correspondingly larger number of mounting brackets should be ordered (the amount supplied as standard is provided for the substrate with the strength of concrete class C20/25).*

1. Mark the space for the openings for the mounting handles:



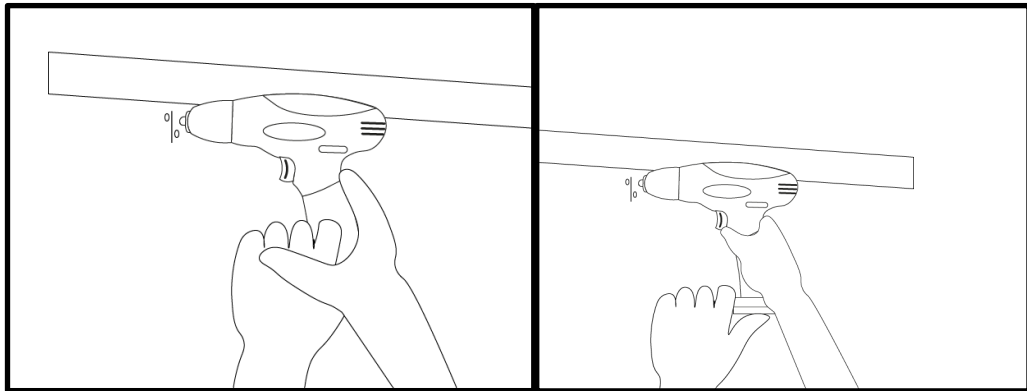
- a) mounting to the wall – the number of handles is selected to the width of the system and should be symmetrically mounted.



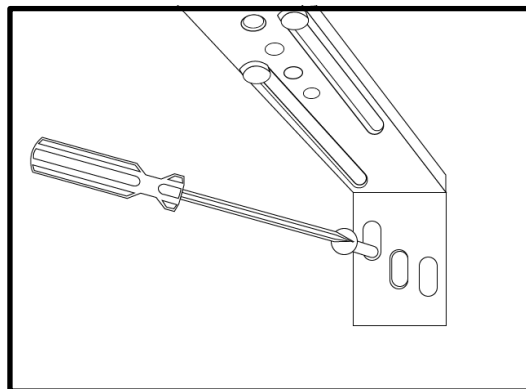


b) ceiling mounting

2. In marked places in the drilling hole for the expansion joints (their length and type adapt to the substrate).

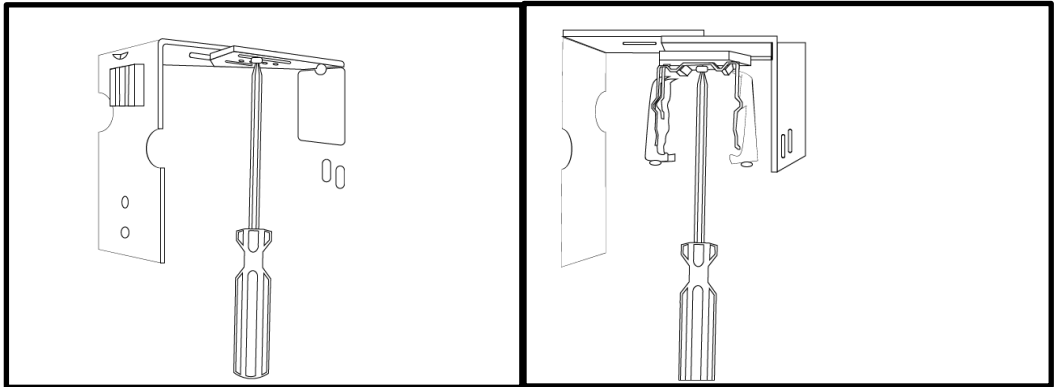


3. Screw the handles to the designated holes.

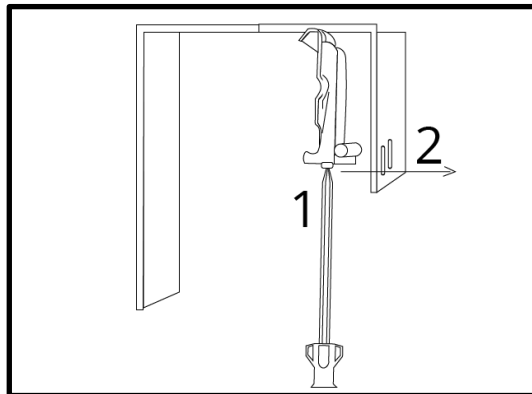


4. Lock the handles with screws.

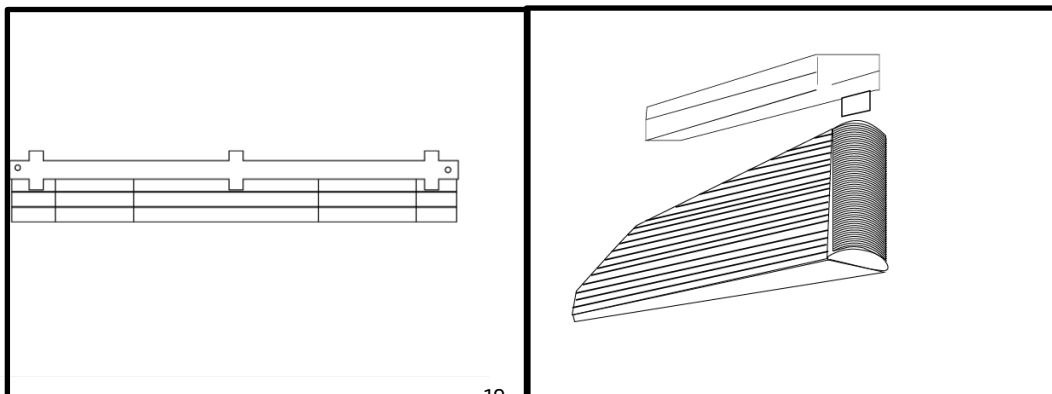
Adjust the position of the handle to the depth of the recess or sheet of the cover.  
Attach the handles automatically to pre-mounted.



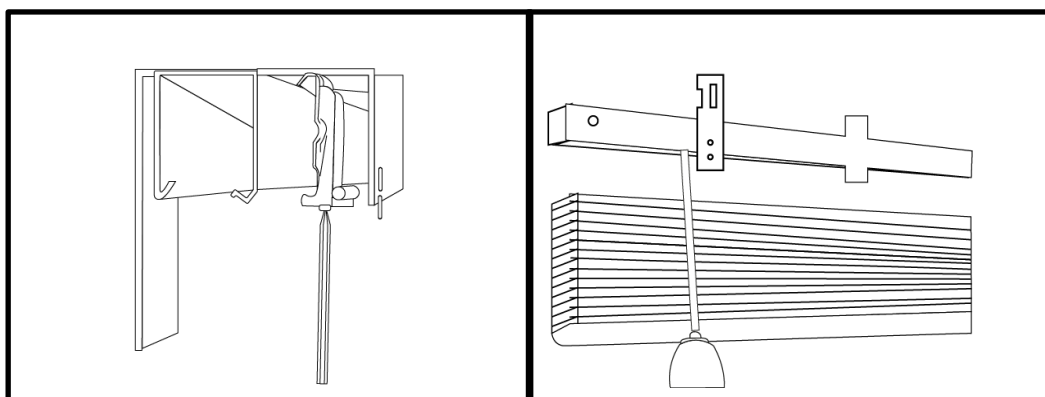
5. Loosen the screws in the automatic handles and open the jaws of the handle.



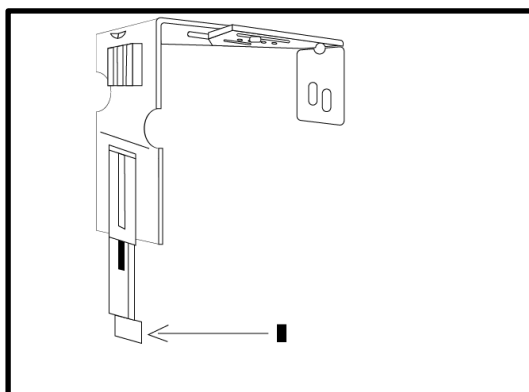
6. Attach the main rail with the package to the obtuse handles and close the handles.



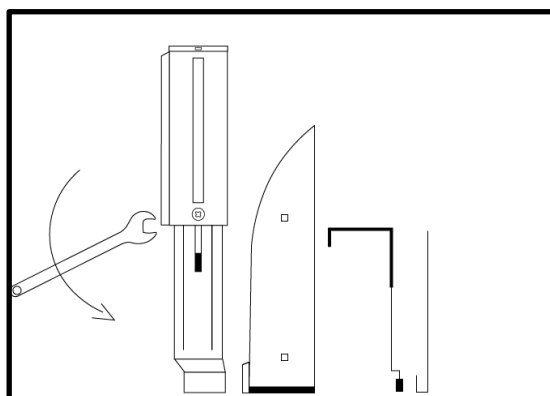
7. Tighten the rail holder screws.



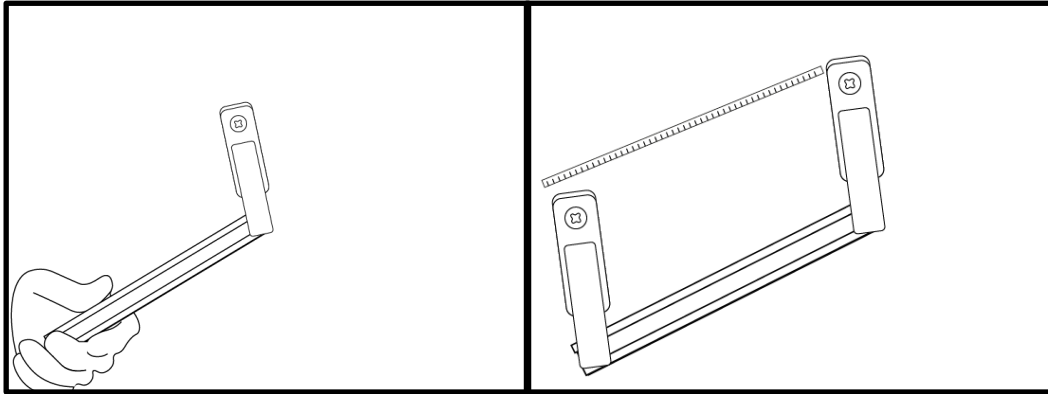
8. If there is a cover sheet to the wall mount, attach the extension E. Apply a damping cap at the end of the extension.



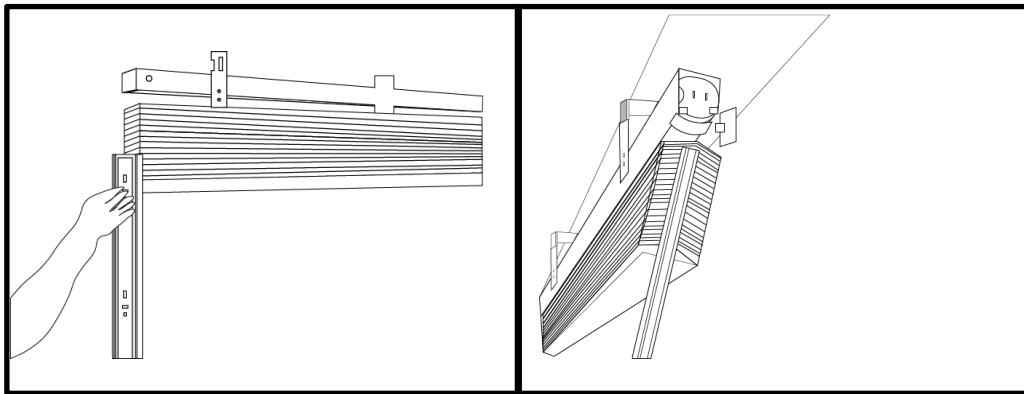
9. Apply the cover plate to the handles, extend the extension until the tip with the damping cap is in the channel of the cover sheet. Tighten the extension screw.



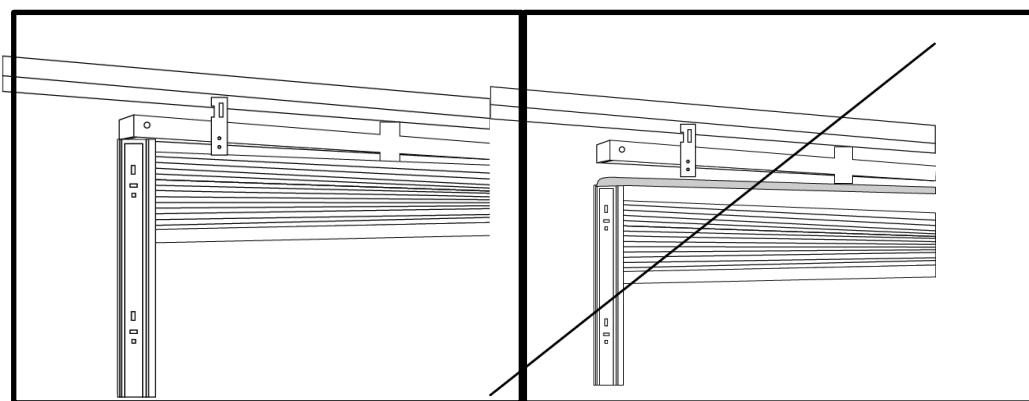
10. Put the handles on the guide. Arrange them symmetrically.



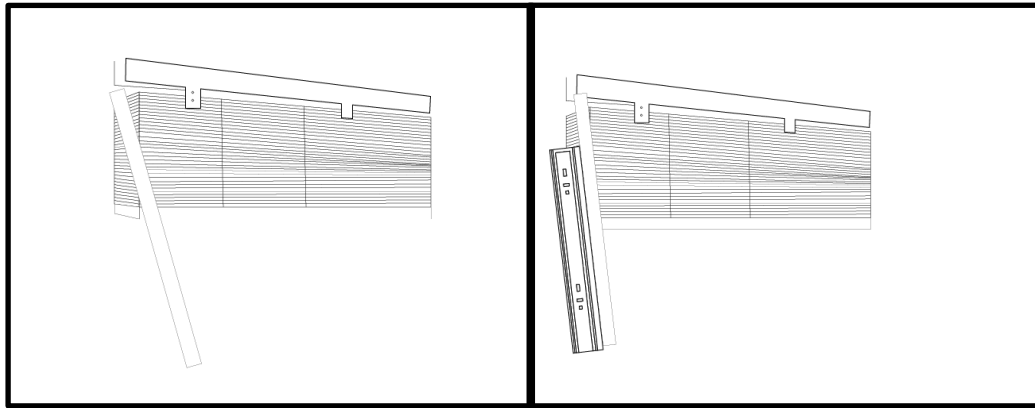
11. Slide the guide on the lamella pin.



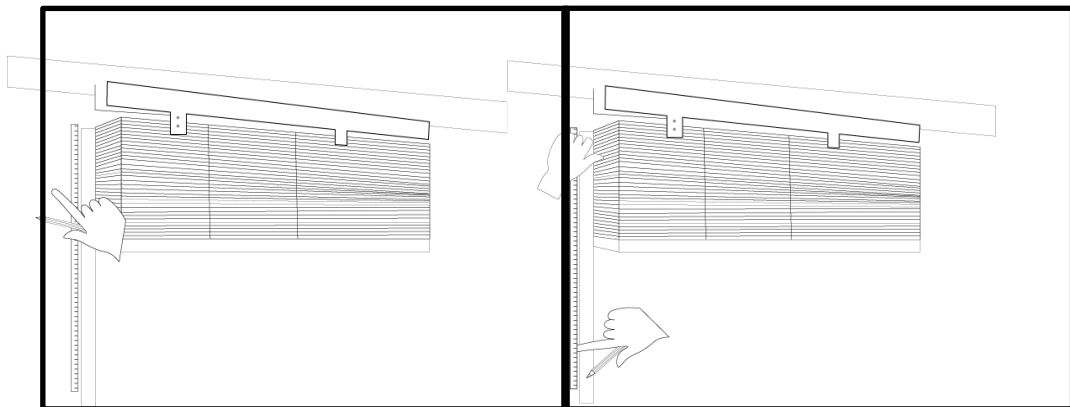
12. Correct positioning of the guide (left drawing).



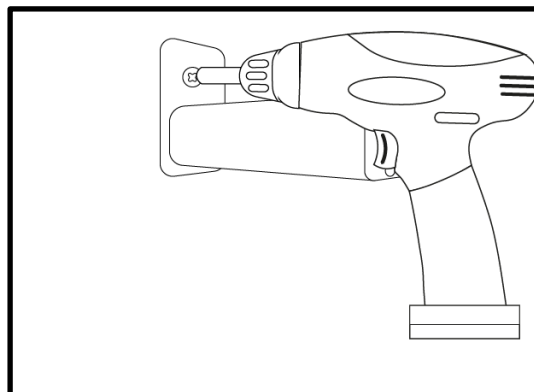
13. Remark! If there is a positioner, put a guide on it.



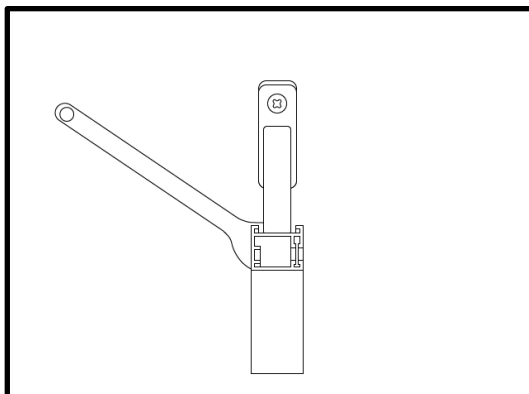
14. Use a spirit level to set the vertical position of the guide.



15. Determine where to mount the guide holders and screw the handles to the ground.

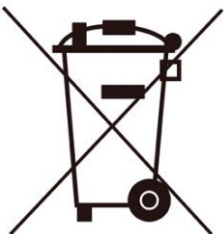


16. Set the distance of the guide from the wall and lock the slide mounting brackets.



17. Carry out a test of the operation of the blinds.
18. In the electric blind, connect the electrical controls and the electrical supply according to the drive installation instructions and adjust the limit stops carefully.
19. Check the correct functioning of all connections.
20. Train the user in the operation and operation of the blinds.





Do not dispose of used electrical appliances in the trash can.